



GAT MONTHLY MEMBERSHIP PROGRESS REPORT

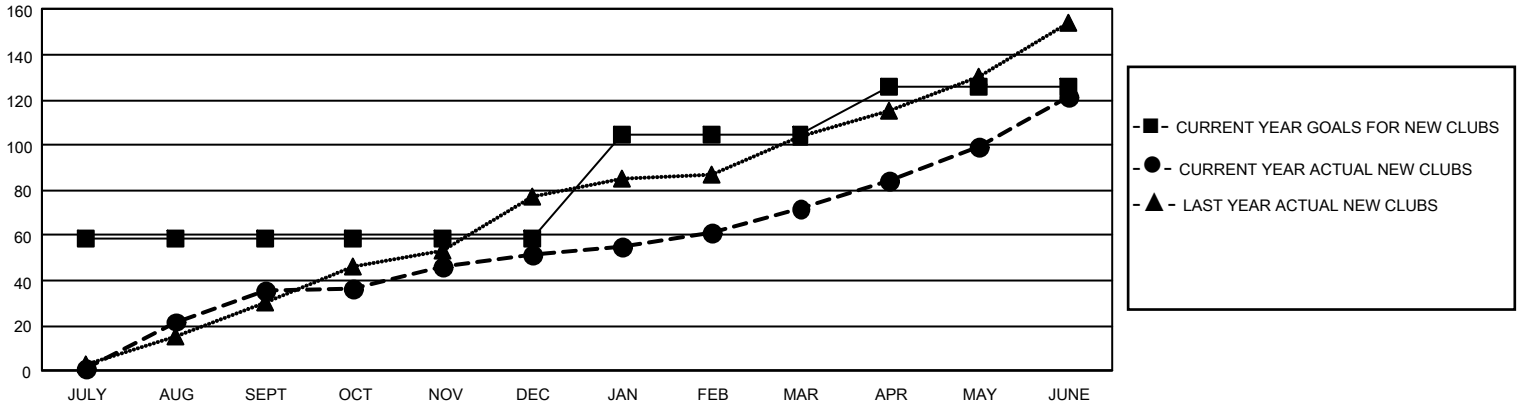
Results as of: 6/30/2024

GMT Constitutional Area 6 - S, Group A

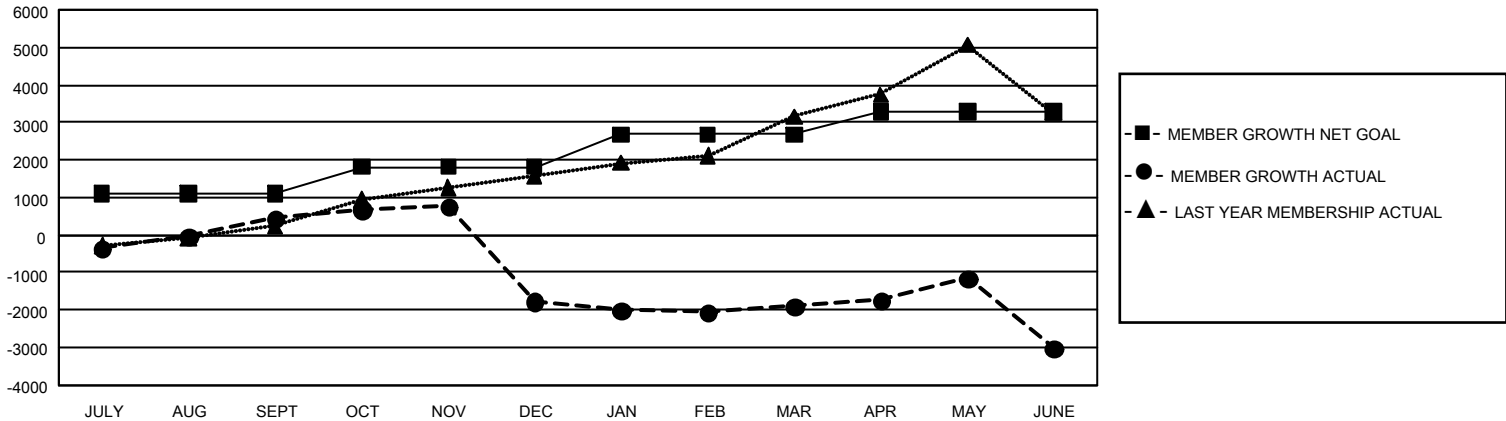
REPORT DOES NOT INCLUDE CLUBS IN UNDISTRICTED AREAS.

Clubs				Members			
RESULTS FOR 2023-2024				RESULTS FOR 2023-2024			
QUARTER	NEW CLUB GOAL	NEW CLUBS	DROPPED CLUBS	QUARTER	MEMBER GROWTH NET GOAL	MEMBER GROWTH ACTUAL	DROPPED MEMBERS ACTUAL (including transfers)
JULY/AUG/SEPT	177	36	2	JULY/AUG/SEPT	1099	2,160	1,361
OCT/NOV/DEC	0	16	50	OCT/NOV/DEC	720	1,941	3,768
JAN/FEB/MAR	138	20	31	JAN/FEB/MAR	858	2,057	1,869
APR/MAY/JUNE	63	49	79	APR/MAY/JUNE	598	4,600	4,592

GOALS AND ACTUAL NEW CLUBS CUMULATIVE



GOALS AND ACTUAL MEMBERS CUMULATIVE



DROPPED CLUBS: 162	939 CLUBS OF 1,582 ADDED 1 OR MORE NEW MEMBERS	<u>GENDER DISTRIBUTION</u>	
		MALE 30,000 (75.71%) FEMALE 9,620 (24.28%) NON BINARY 0 (0.00%) PREFER NOT TO ANSWER 5 (0.01%)	
<u>DROPPED MEMBERS</u>		CLICK HERE FOR CUMULATIVE MEMBERSHIP DATA	TOTAL FAMILY UNIT MEMBERS 12,889
DECEASED 88 CLUB CANCELLED 3,395 OTHER 8,102 TOTAL 11,585			FAMILY MEMBERS PAYING HALF DUES 8,146